

Making Sense of Crises: Transdisciplinary Perspectives

Prof. Nitin Sawhney and Ali Unlu

CRAI-CIS Research Group and THL

*Department of Computer Science
Aalto University*

Projects



trust-M: Designing Inclusive
& Trustworthy Digital Public
Services for Migrants



civic agency in
artificial intelligence



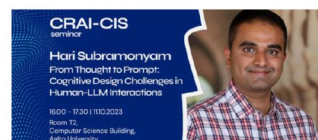
ai—infused disinformation
in media communications



Principles & Practices

- Explore the impact of technology in critical societal contexts for responsible AI, inclusion and civic agency.
- Interdisciplinary group working at the intersection of computational & social sciences engaging HCI, participatory design, and policy.
- Focus on collaboration with societal partners, especially the public sector in Finland.

Public Engagement



From Thought to Prompt: Cognitive Design Challenges in Human-LLM Interactions

11.10.2023 16:00-17:30 | Events



Life and Tech at the Edge: Refiguring Possible Futures

Speaker: Sarah Pink

20.9.2023 16:00-17:30 | Events



Theory-driven HCI

Speaker: Michel Beaudouin-Lafon
Professor of Computer

11.5.2023 14:00-15:30 | Events

People



Nitin Sawhney
Professor of Practice



Minna Tikka
Postdoctoral Researcher



Viivi Eskelinen
Postdoctoral researcher



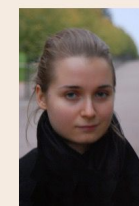
Fedor Vitiugin
Postdoctoral researcher



Sunok Lee
Postdoctoral Researcher



Henna Paakki
Doctoral Researcher



Kaisla Kajava
Doctoral Researcher



Karolina Drobotowicz
Doctoral Researcher



Antti Rannisto
Doctoral Researcher



Ana Paula Gonzalez Torres
Doctoral Researcher



Uttishta Varanasi
Doctoral Researcher



Rūta Šerpytytė
Design Researcher



Rahim Ahsanullah
Masters Researcher



Sophie Truong
Research Assistant



Sanni Lares
Masters Researcher



Lucy Truong
Masters Researcher



Crises

Affecting individual, group, community, society, nation or system

Turning point for better or worse

Krisis – to separate, to decide, to draw distinction

Decisive moment (as in a literary plot)

A situation that has reached a critical phase

Unstable or crucial time when a decisive change is impending

Physical, social or psychological stress

Different scales, durations and frequencies of impact

Crisis of moral values, an economical or political crisis

Communication

Situational awareness, trust, and contextually relevant sensemaking among all stakeholders.

Cooperation

Process of working or acting together for common, mutual, or underlying benefit.

Crises

Contestation

For democracy “agonistic confrontation” is in fact its very condition of existence.

- Chantal Mouffe

Coping with Humanitarian Crises

Public Sector &
Civil Society on
the Frontlines!




Afghan refugees arrive at Dulles International Airport on Aug. 27, 2021, after being evacuated from Kabul following the Taliban takeover of Afghanistan.

Olivier Douliery/AFP via Getty Images

Communication in Crisis

AI translation is jeopardizing Afghan asylum claims

Cost-cutting translations are introducing errors
and putting refugees at risk.



A crisis translator specializing in Afghan languages, Mirkhail was working with a Pashto-speaking refugee who had fled Afghanistan. A U.S. court had denied the refugee's asylum bid because her written application didn't match the story told in the initial interviews.

Lost in Translation: Algorithmic Discrimination



“Machine-learning translations are not yet in a place to be trusted completely without human review.”

The challenge of “low-resource” languages like Pashto and increasing use of machine translations in immigration services!

Home Office to scrap 'racist algorithm' for UK visa applicants

Tool criticised for creating hostile environment for migrants and 'speedy boarding for white people'

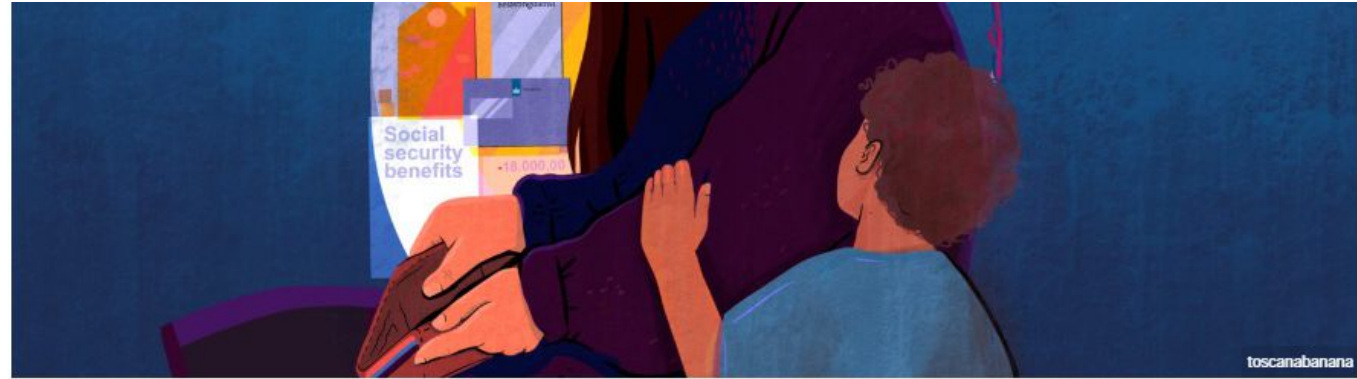


Home Office solicitors confirmed that the home secretary, Priti Patel (pictured), 'has decided that she will discontinue the use of the streaming tool to assess visa applications, pending a substitute review of its operation'. Photograph: Dominic Lipinski/PA

The **Home Office** is to scrap a controversial decision-making algorithm that migrants' rights campaigners claim created a "hostile environment" for people applying for UK visas.

The "streaming algorithm", which campaigners have described as racist, has been used since 2015 to process visa applications to the UK. It will be abandoned from Friday, according to a letter from Home Office solicitors seen by the Guardian.

The decision to scrap it comes ahead of a judicial review from the **Joint Council for the Welfare of Immigrants** (JCWI), which was to challenge the Home Office's artificial intelligence system that filters UK visa applications.



< NEWS

October 25, 2021

Dutch childcare benefit scandal an urgent wake-up call to ban racist algorithms

The Dutch government risks exacerbating racial discrimination through the continued use of unregulated algorithms in the public sector, Amnesty International said in a damning new analysis of the country's childcare benefit scandal.

The report *Xenophobic Machines* exposes how racial profiling was baked into the design of the algorithmic system used to determine whether claims for childcare benefit were flagged as incorrect and potentially fraudulent. Tens of thousands of parents and caregivers from mostly low-income families were falsely accused of fraud by the Dutch tax authorities as a result, with people from ethnic minorities disproportionately impacted. While the scandal brought down the Dutch government in January, sufficient lessons have not been learnt despite multiple investigations.

“
Governments around the world are rushing to automate the delivery of public services, but it is the most marginalized in society that are paying the highest price.

Merel Koning, Senior Advisor on Technology and Human Rights

Recently added

Senegal: The State must move from commitment to strong action to protect talibé children

FIFA misleading world on remedy for migrant workers

Op-ed: A flicker of hope for human rights in South Asia

Write for Rights 2022: Championing activists in a year of global protest

Write for Rights: World's biggest human rights event returns for Human Rights Day 2022

Amnesty International News



Way Forward? Fostering Inclusive Trustworthy and Responsible AI in the Public Sector



Creating trustworthy and accessible digital public services for migrants



- Interdisciplinary team of 30+ people
- Funded for 3 (+3) years
- Looking for hybrid services, possibly based on conversational AI and/or speech-based interaction
- One of the main migrant groups of interest is migrant women
- Piloting services in the City of Espoo.



TRUST
TECH



DESIGN



POLICY



IMPACT

Participatory Research & Collaborative Design



21.7.2023 / Collaborations

Stretching our empathy towards migrant challenges: collaborative workshops with the city of Espoo

By Rūta Šerpytė – Design researcher at Trust M

Bhuvana Sekar, Aalto University and Irena Bakic, City of Espoo

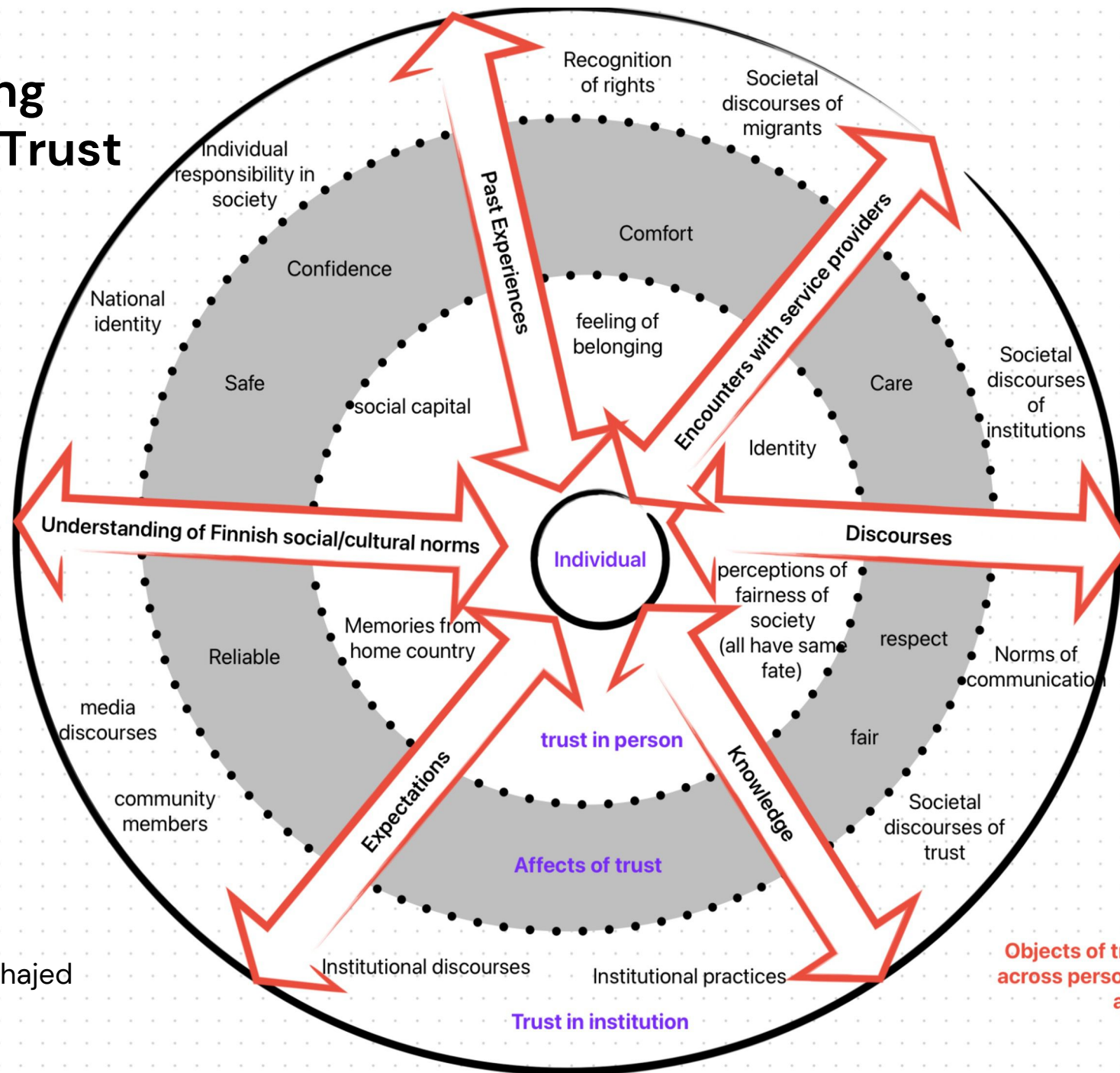
Rahim Ahsanullah and Lucy Truong, Aalto University



Enhancing Conversations in Migrant Counseling Services: Designing for Trustworthy Human-AI Collaboration

- Lucy Truong, Thesis Research (2023)

Understanding Concepts of Trust



Trust & Context in Crisis Communication

Research Project: *Reconstructing Crisis Narratives for Trustworthy Communication and Cooperative Agency*

Trust in crisis communication

- Relational: bridging authorities and citizens (Hardin 2001)
- Increases the willingness to cooperate (Hoffman 2001)
- Resource and outcome (Offerdal et al. 2021)

Context in crisis communication

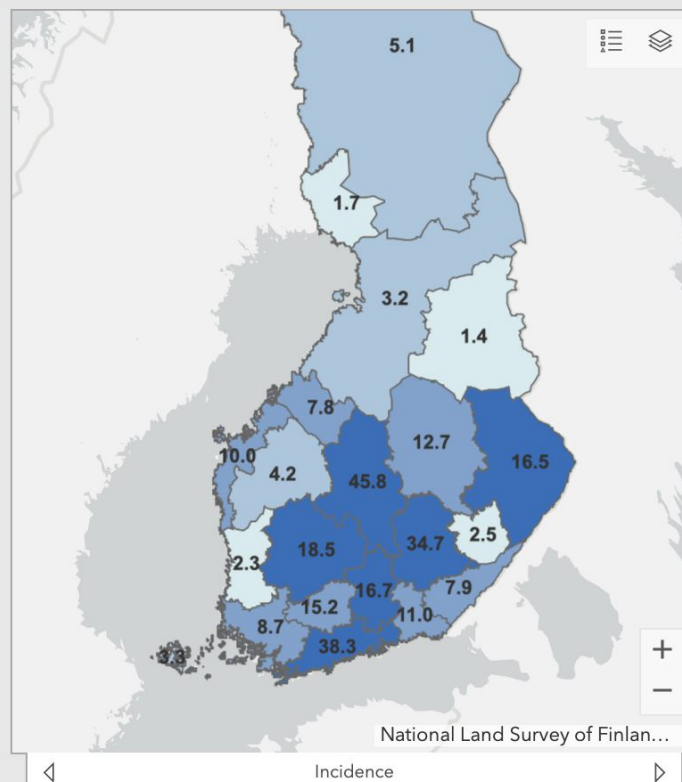
- Crises are temporal and spatial (Dynes 2000; Tierney 2007)
- Contextual vulnerabilities (Hoffman & Oliver-Smith 2002)
- Context resonates in the responses of publics and organizations (Boltanski 1999; Hayes et al. 2021)



Source: THL / [National Infectious Disease Register](#), the latest data are from 30/9/2020.

Information in the National Infectious Diseases Register is updated with a few days' delay. The data may be updated retroactively. The information is updated at 12 noon.

The tabs on the map show the incidence of the disease, and the number of cases and tests by hospital district and municipality. The upper right corner of the Incidence tab in the map view allows you to select different map layers. You can either view data from the entire period (cumulative) or from the last 14 days. By default, the map displays data from the previous 14 days. You can find an explanation of the map symbols by clicking on the menu in the upper right



Confirmed cases (cumulative number)

9,992

+100

(change from previous day)

Cases
(last 14 days)1,149
586

(previous 14 days)

Incidence
(last 14 days)20.9
10.7

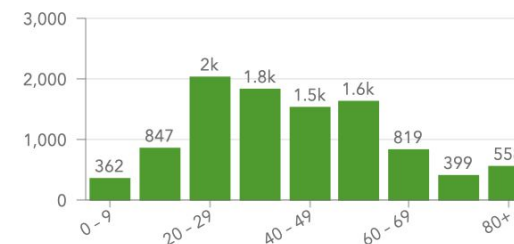
(previous 14 days)

Tests (total)

1,038,721
+12,637

(change from previous day)

Cases by age-group



Cases by municipality

(municipalities with fewer than 5 cases excluded)

3459 Helsinki

19 Hollola

101 Hyvinkää

10 Ii

23 Iisalmi

6 Inkoo

17 Jämsä

15 Janakkala

155 Järvenpää

21 Joensuu

270 Jyväskylä

21 Kaarina

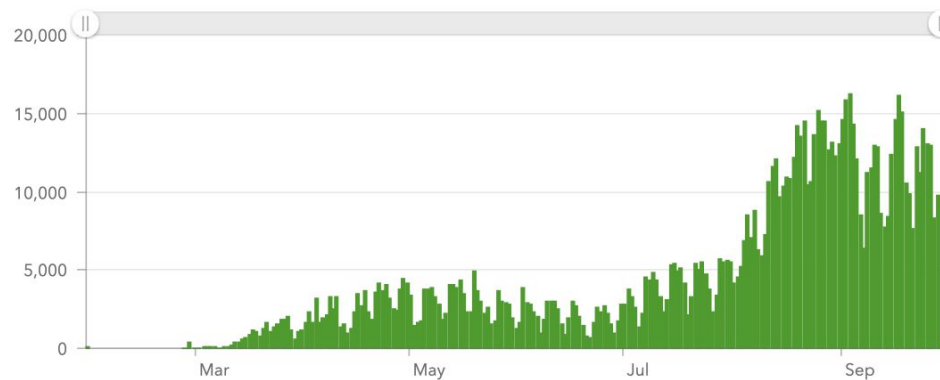
30 Kajaani

16 Kangasala

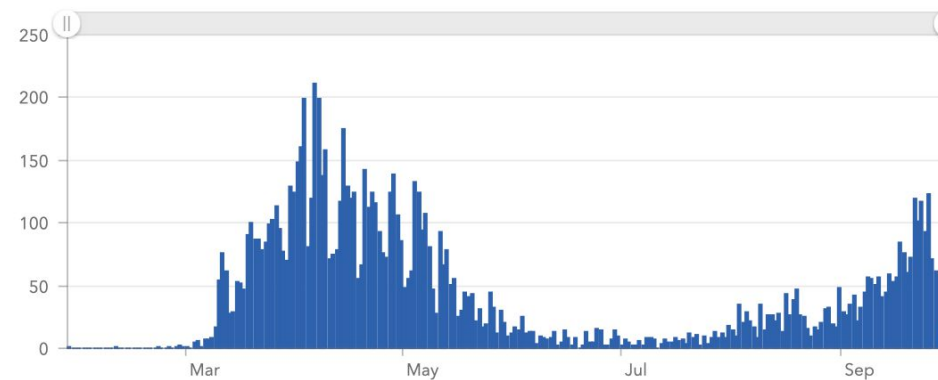
40 Kauniainen

60 Kemi

Number of tested specimens (by date of testing)

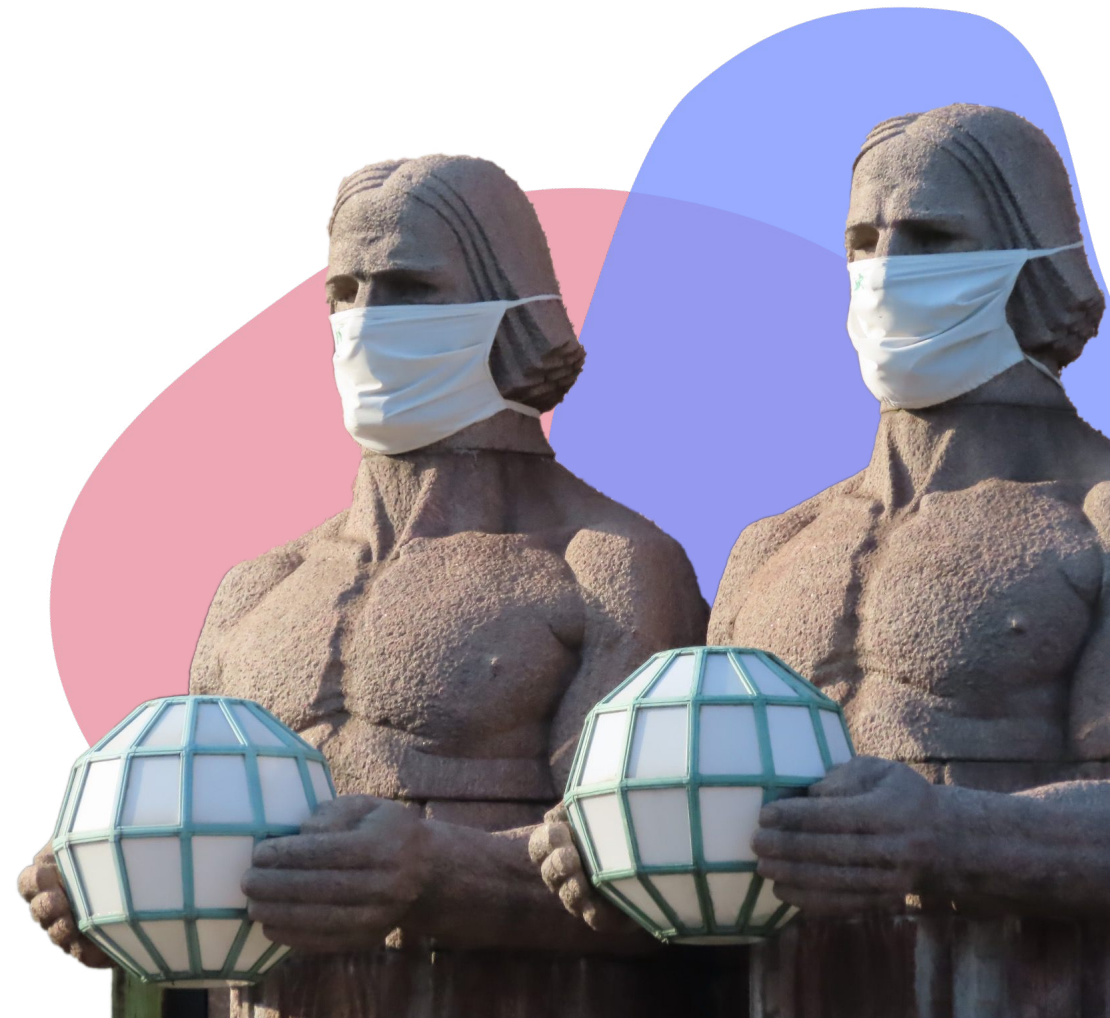


Cases by day (by date of specimen collection)

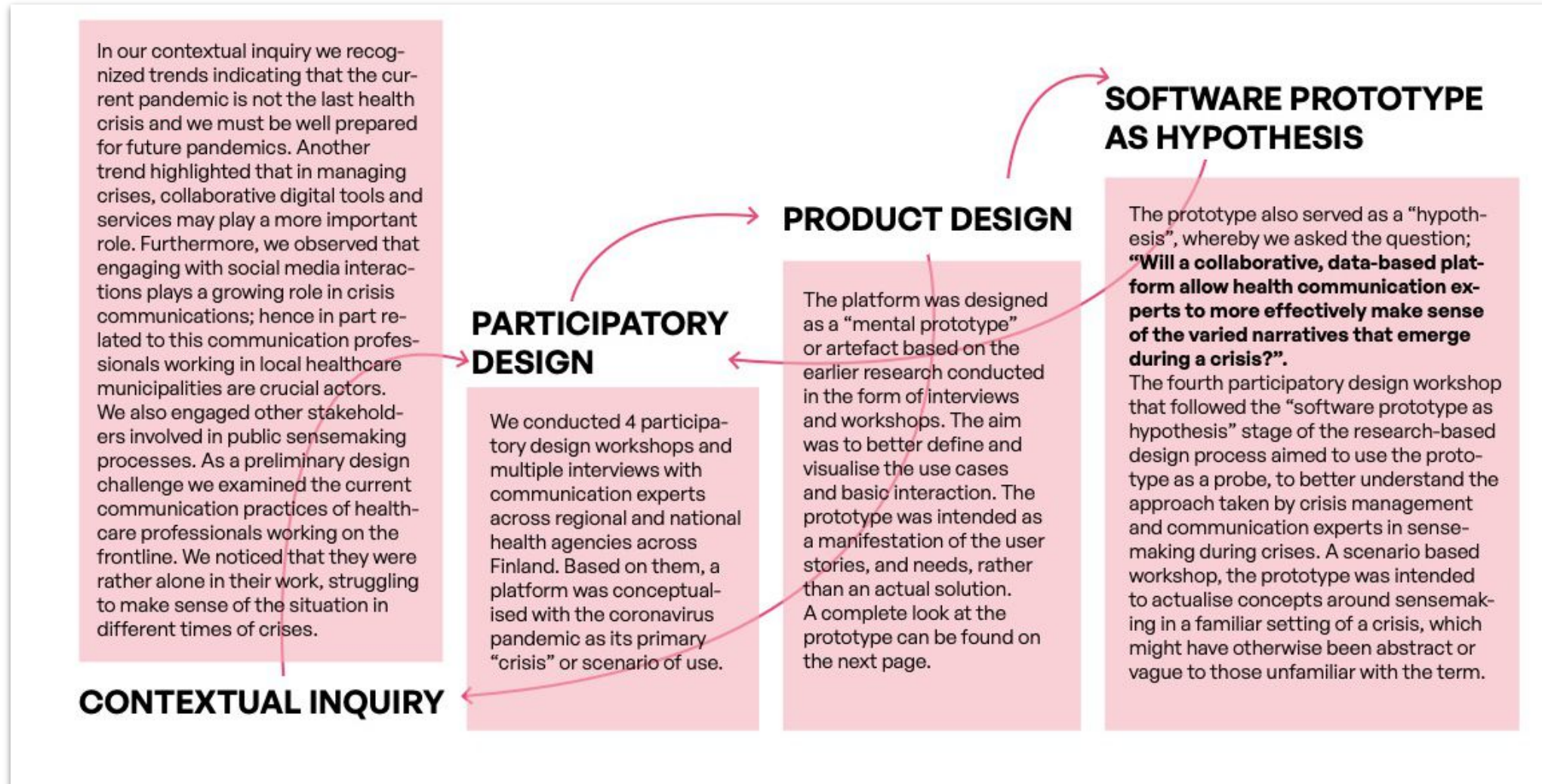


Collaborative Sensemaking in Crisis: Designing Practices & Platforms for Resilience

Uttishta Varanasi, Teemu Leinonen, Minttu
Tikka, Nitin Sawhney & Rahim Ahsanullah



PARTICIPATORY DESIGN RESEARCH



4 total
workshops

16 workshop
participants

**1 Contextual Inquiry
Workshop**

Participants from
YLE, THL, AVI, Regional Hospital

YLE- Finnish Broadcasting Company
THL- Finnish institute for Health and Welfare
AVI- Regional State Administrative Agency

**2 Contextual Inquiry
Workshop**

Participants from
**Head of communications at southern
Finland's AVI, communications at Social
Services, SOTE, Journalist / TV-host**

LVM- Ministry of Transport and communications
SOTE- Health Care and Rescue Services Division
TRAFI- Finnish Transport Safety Agency

**3 Participatory
Design Workshop**

Participants from
**Social media analyst, communications
at TRAFI, AVI, THL**

**4 Participatory
Design Workshop**

Participants from
communications at AVI, THL, LVM

Narratives



News



Social media



Visuals

Topics

Masks

Vaccines

Quarantine

THL

Statistics

Coronavirus ▼

Vaccinations

Deaths

Hospitalisations

Context

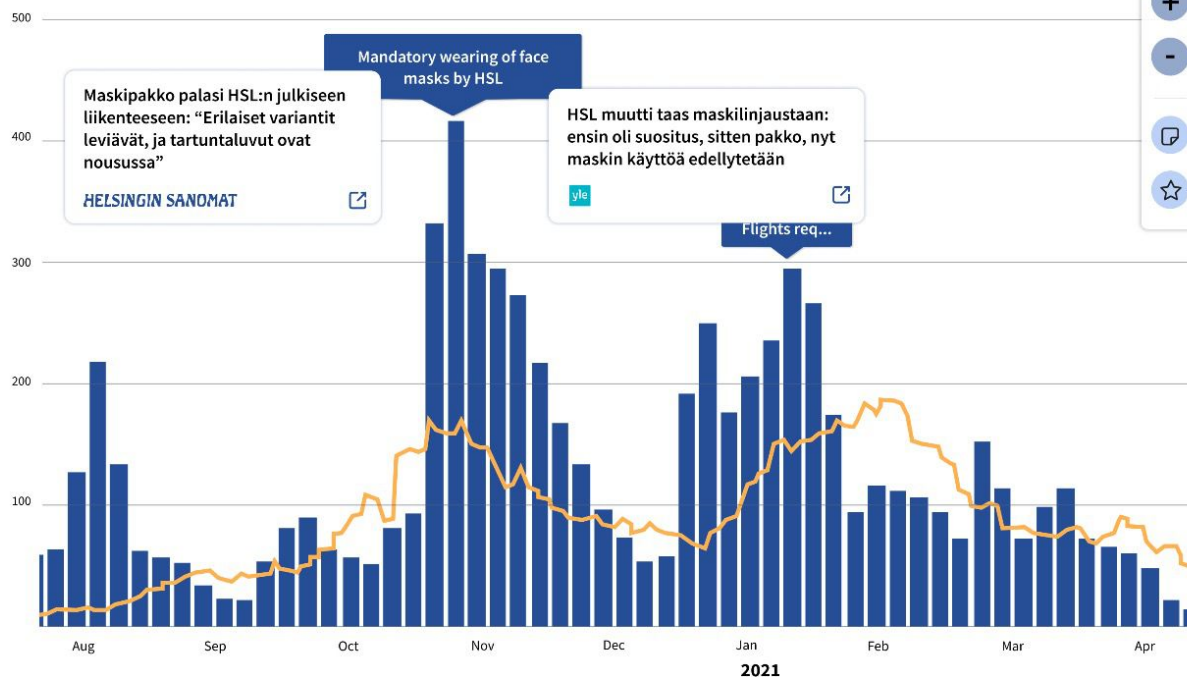
Mask mandate for HSL public transport starting from 13 March 2021: information and instructions



The Metropolitan Area coronavirus coordination group decides on stricter mask recommendations and extensive remote work



+



Conversation Notes

Masks

12/03/21

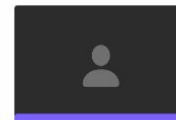
Members: Janne Döe, Jari Döe, Hannu Döe, Jakko Döe, Jan Döe

The public was very apprehensive about the new quarantine rules. This point is made in the context of PM's announcement on the 5th of January.

THL did mention the different timeframes for the quarantine. What is the main concern with quarantines? I believe the key concern is for families with small children.

Quarantine

22/05/21



Archive

Export Conversation

Settings

Data last updated on 11.02.21

Narratives



News



Social media



Visuals

Topics

Masks

Vaccines

Quarantine

THL

Statistics

Coronavirus ▼

Vaccinations

Deaths

Hospitalisations

500

400

300

Mandatory wearing of face masks by HSL

Maskipakko palasi HSL:n julkiseen liikenteeseen: "Erilaiset variantit leviävät, ja tartuntaluvut ovat nousussa"

HELSINGIN SANOMAT



HSL muutti taas maskilinjaustaan: ensin oli suositus, sitten pakko, nyt maskin käyttöä edellytetään

yle

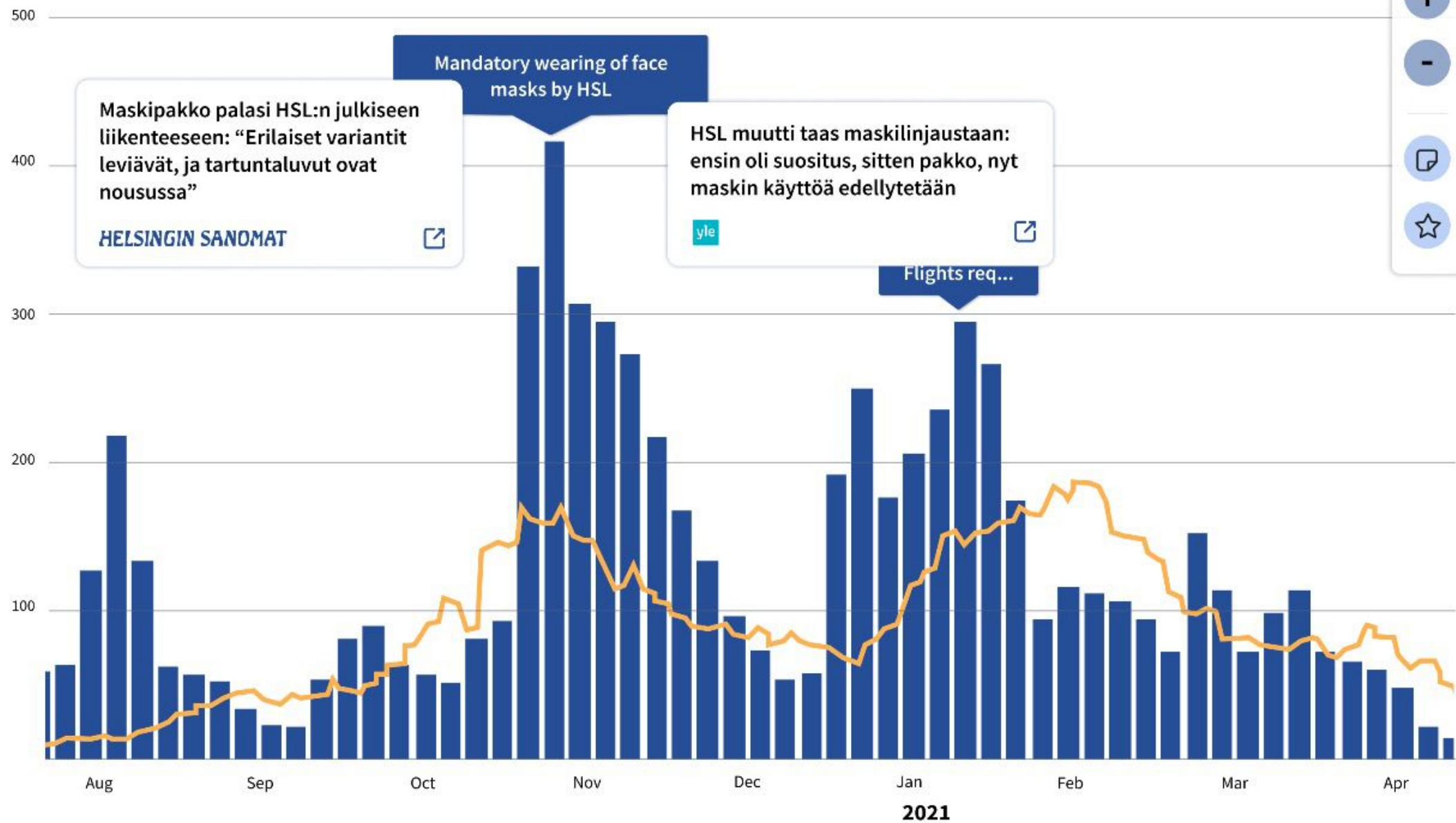


Flights req...

+

-





Con

Ma

Men

TI

ru

on

TI

qu

be

Qu

Statistics Coronavirus ▼

Vaccinations

Deaths

Hospitalisations

Quarantine

THL

Context

Mask mandate for HSL public transport starting from 13 March 2021: information and instructions



The Metropolitan Area coronavirus coordination group decides on stricter mask recommendations and extensive remote work

Helsinki



Quarantine wearing of face masks by HSL

HSL muutti taas maskilinjaustaan: ensin oli suositus, sitten pakko, nyt maskin käyttöä edellytetään

yle

Flights req...



Conversation Notes

Masks

12/03/21

Members: Janne Döe

Jari Döe

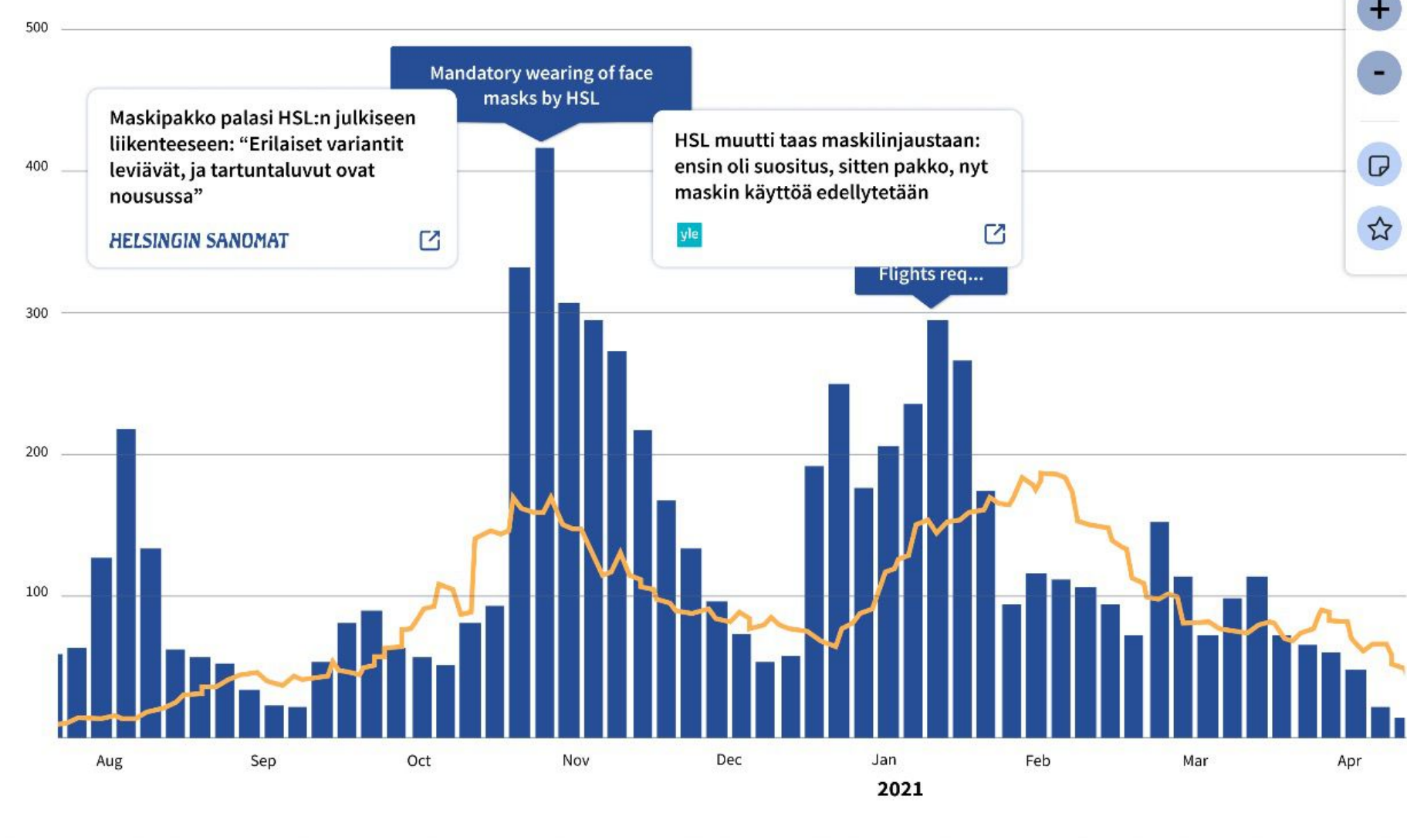
Hannu Döe

Jakko Döe

Jan Döe

The public was very apprehensive about the new quarantine rules. This point is made in the context of PM's announcement on the 5th of January.

THL did mention the different timeframes for the quarantine. What is the main concern with quarantines? I believe the key concern is for families with small children.



Masks

Members: Janne Döe, Jari Döe, Hannu Döe, Jakko Döe, Jan Döe

The public was very apprehensive about the new rules. This point is made in the context of PM's announcement on the 5th of January.

THL did mention the different timeframes for the quarantine. What is the main concern with quarantine? I believe the key concern is for families with small children.

Quarantine

Archive

Export Conversation

Data last updated on 11.02.21

Narratives



News



Social media



Visuals

Topics

Masks

Vaccines

Quarantine

THL

Statistics

Coronavirus ▼

Vaccinations

Deaths

Hospitalisations

Context

Mask mandate for HSL public transport starting from 13 March 2021: information and instructions



The Metropolitan Area coronavirus coordination group decides on stricter mask recommendations and extensive remote work



Conversation Notes

Masks

12/03/21

Members:

Janne Döe

Jari Döe

Hannu Döe

Jakko Döe

Jan Döe

The public was very apprehensive about the new quarantine rules. This point is made in the context of PM's announcement on the 5th of January.

THL did mention the different timeframes for the quarantine. What is the main concern with quarantines? I believe the key concern is for families with small children.

Quarantine

22/05/21

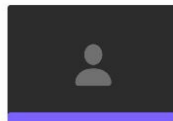
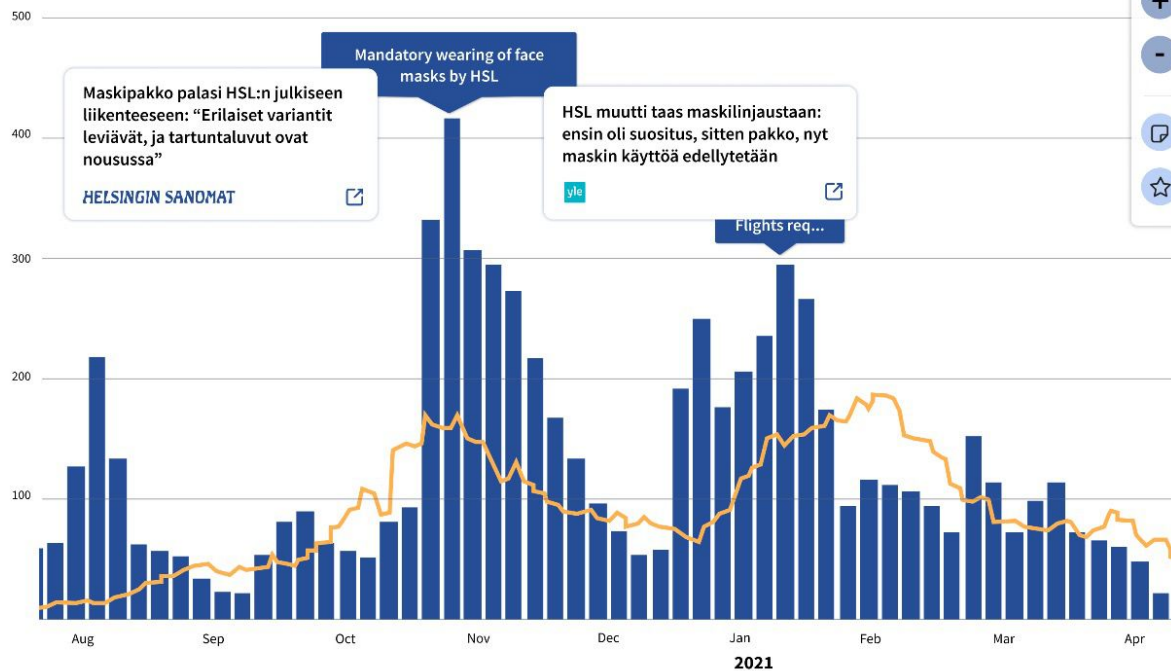
Archive

Export Conversation

Settings

Data last updated on 11.02.21

Crisis Narratives



DESIGN PRINCIPLES

DESIGN PRINCIPLES

DIEGETIC ARTEFACTS

Focus on situational awareness

Holistic design of ancillary services

**Sensemaking as
a tool**

Platforms for collaborative
sensemaking

Technology/Solution should be an existing,
pre-crisis practice/tool

Solution must be cross-departmental

**Sensemaking as a
practice**

Sensemaking hackathons

Addressing actionable information

The solution must have a public
facing component

**Sensemaking as
public engagement**

Citizen-centred collaborative
sensemaking

Rather than data-driven dashboards for crisis awareness and decision-making, how do we facilitate cooperative sensemaking among all stakeholders?



Role of AI in Crisis Communication?

Facilitating Communication in Crisis contexts

- The role of **social media** (benefits & challenges)
 - Fast information delivery
 - Overwhelming information a human being can process
 - Algorithmic settings that lead to filter bubbles and echo-chambers
 - Not a one-way communication; several actors involved
 - Bots, misinformation/disinformation, political polarization
- The role of **public health agencies**
 - Providing accurate and timely information
 - Pre-bunking and debunking
 - Public opinion mining

Our research focus



Spread of misinformation
and vaccine hesitancy on
social media



Relationship between
misinformation and vaccine
hesitancy



Change in political trust in
THL during the crisis on
social media (Facebook
and Twitter)



Effectiveness of THL in
crisis communication



Online communities and
their effects on health
communication



The impact of social media
bots and other malicious
actors on public health
communication

Key Research Outcomes



TRUST

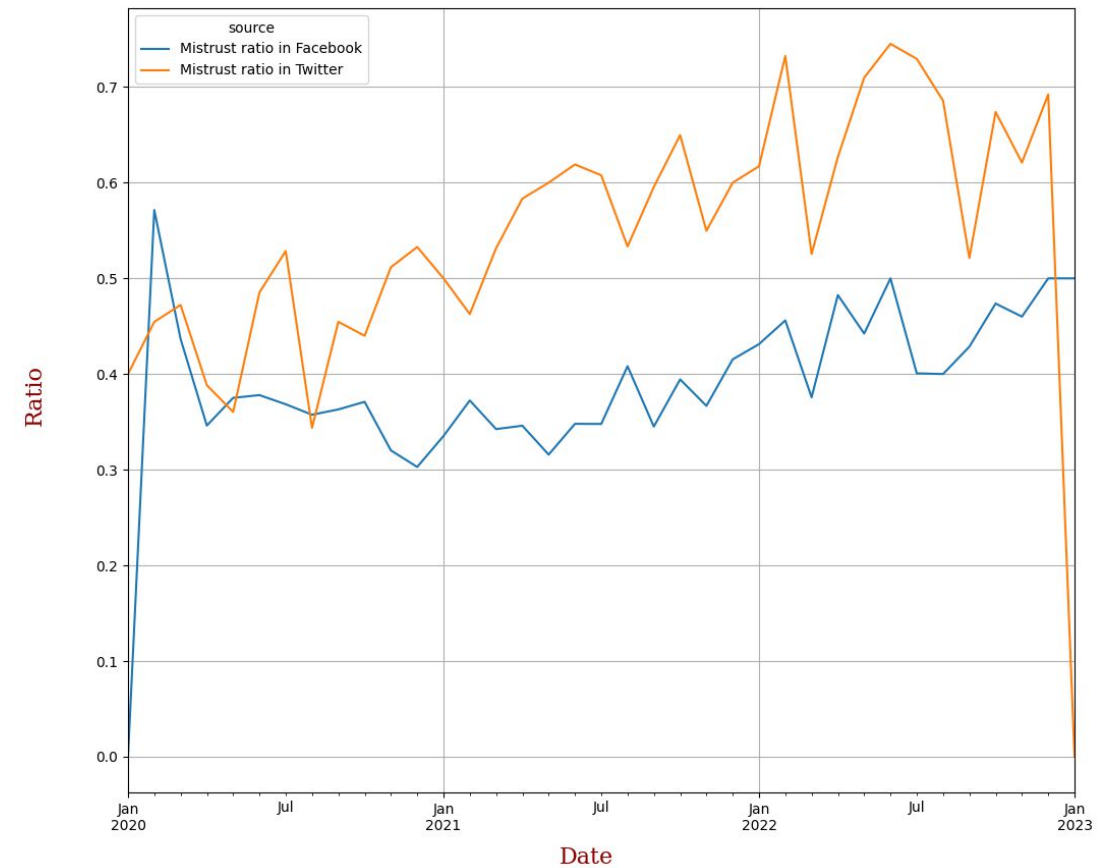
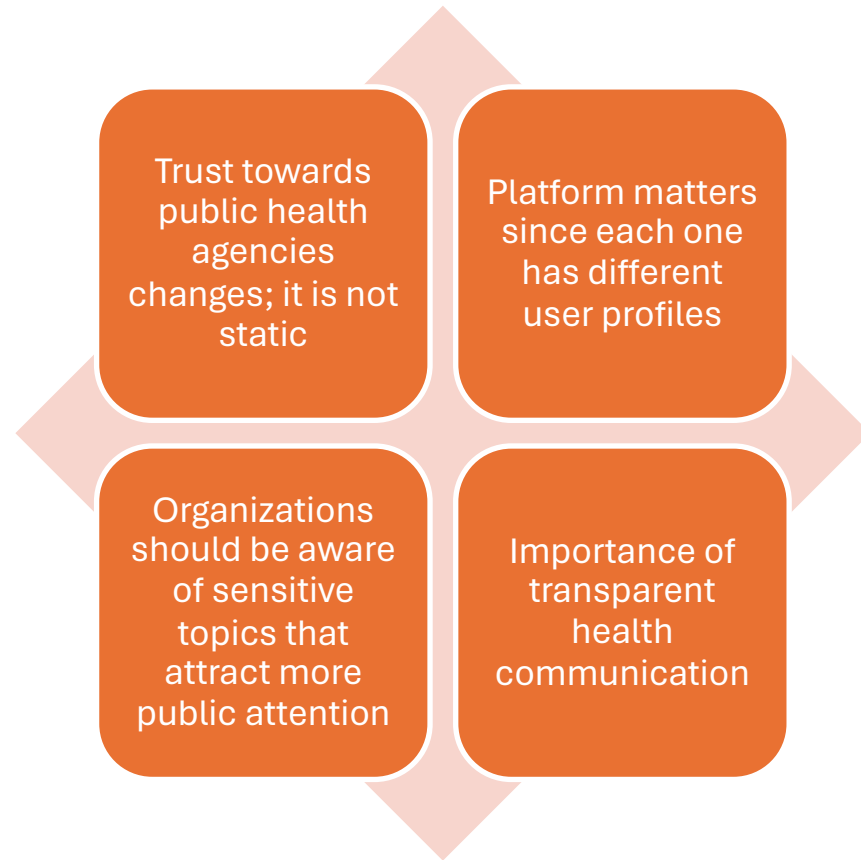


ORGANIZATIONS



ACTORS AND
SETTINGS

Role of Trust



Role of Organizations



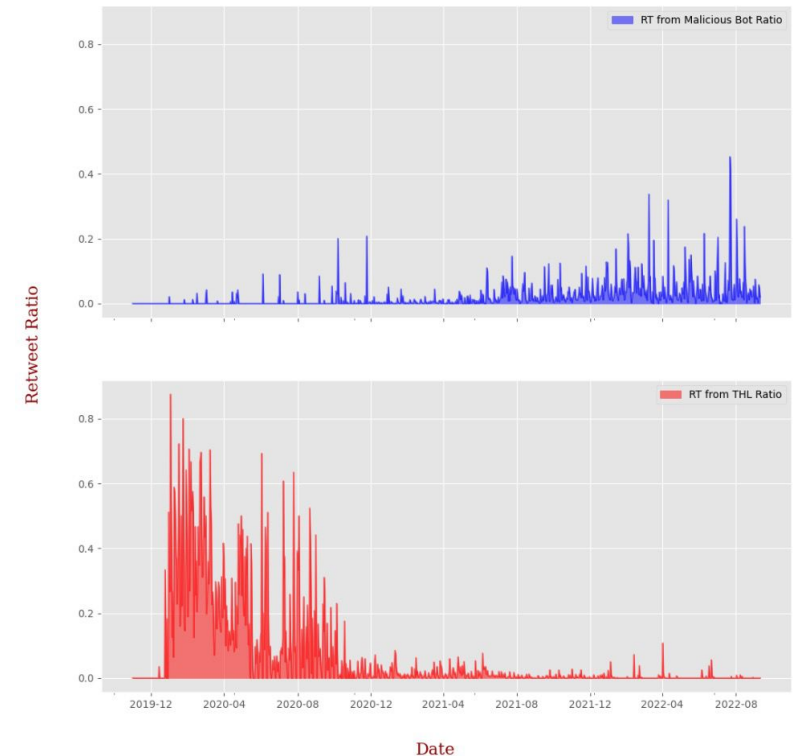
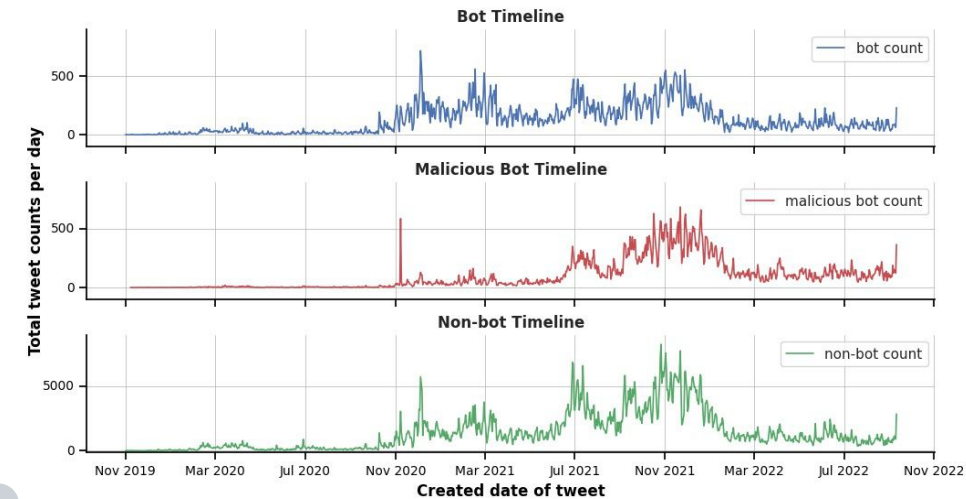
Actors engaged with public health organizations have varied



The type of engagement, content, and actors can change over time

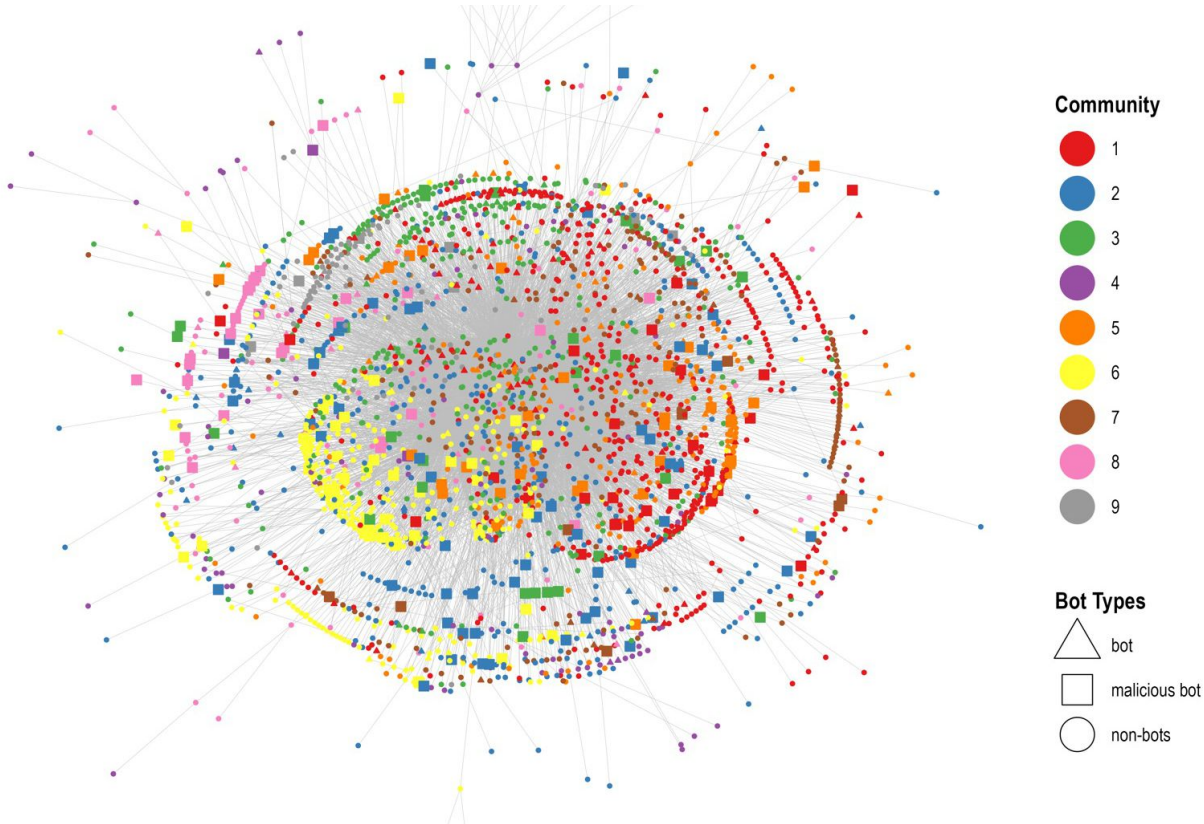


Better communication strategies require better recognition of your counterparts

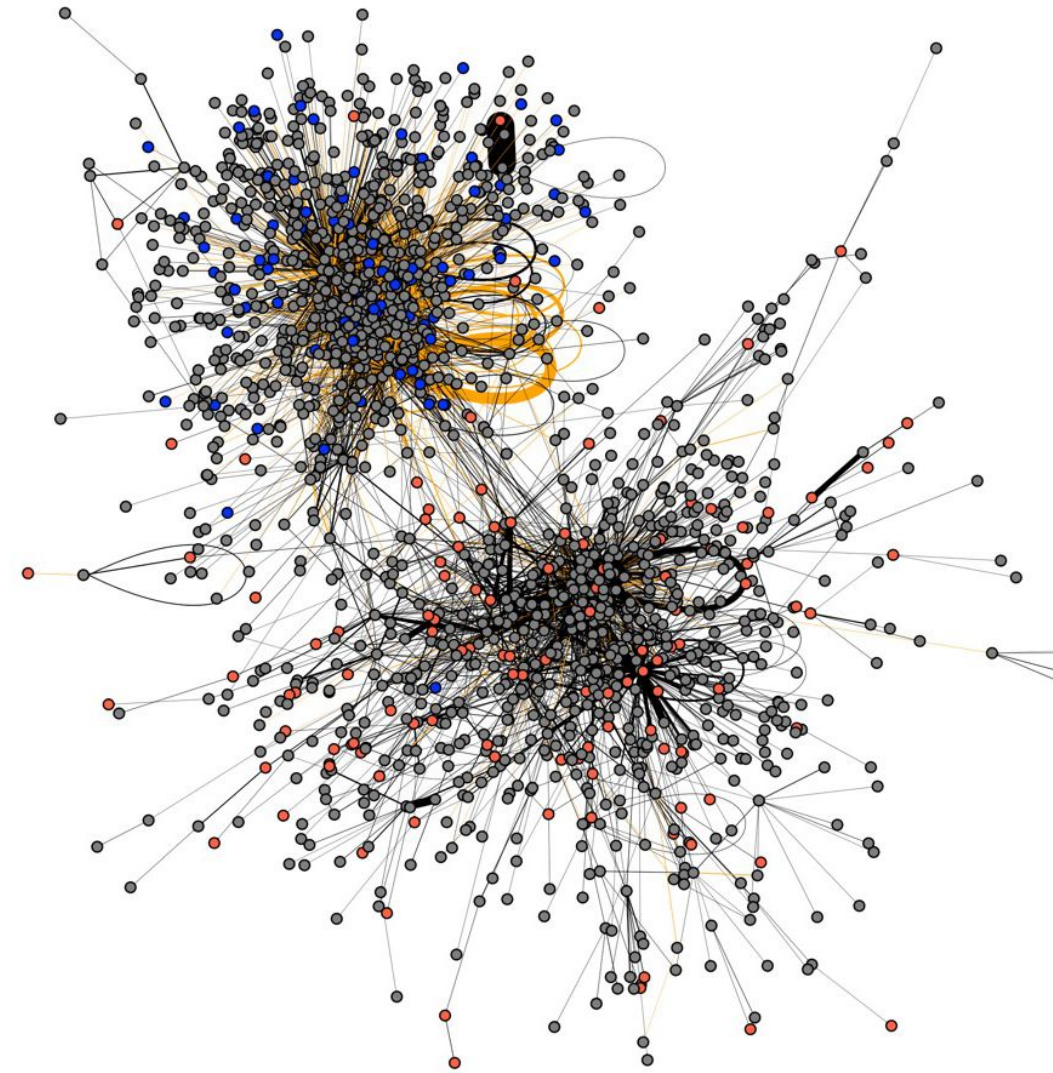


Role of Actors and Settings

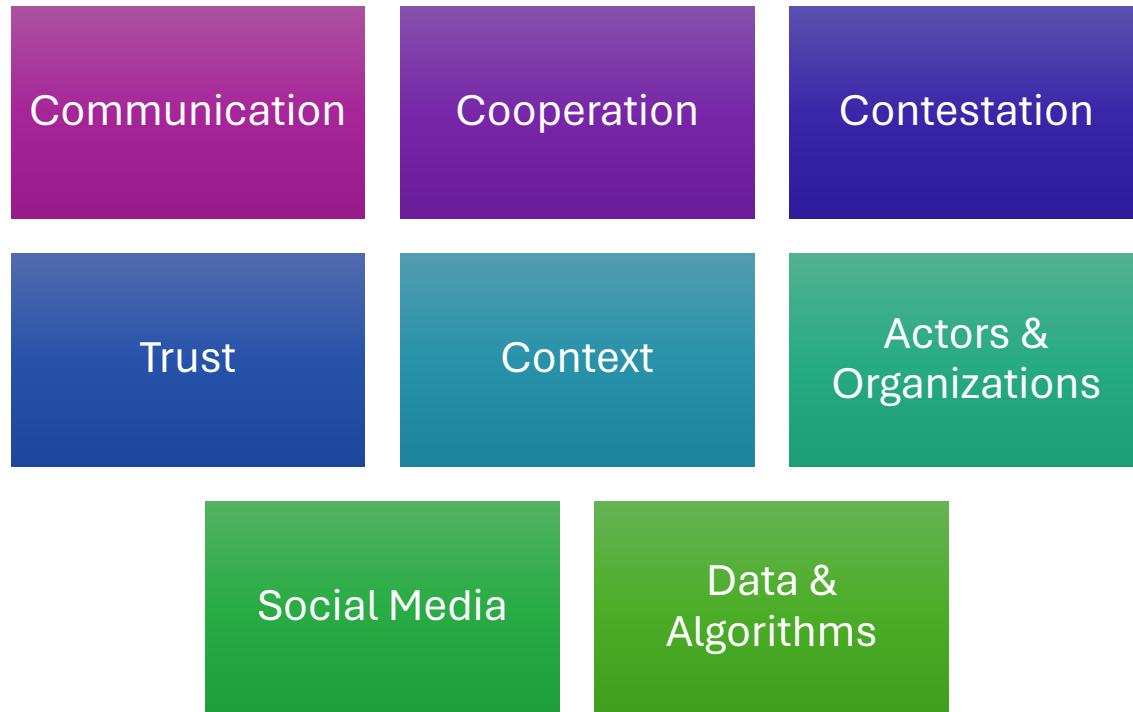
- Identification of influential actors is important
- Actors have different communication strategies and priorities
- Setting the agenda requires strategic communication on social media



rs
ation



Making Sense of Crises: Transdisciplinary Perspectives



Making Sense of Crises: Transdisciplinary Perspectives

Prof. Nitin Sawhney and Ali Unlu

Contacts:

nitin.sawhney@aalto.fi

ali.unlu@aalto.fi

